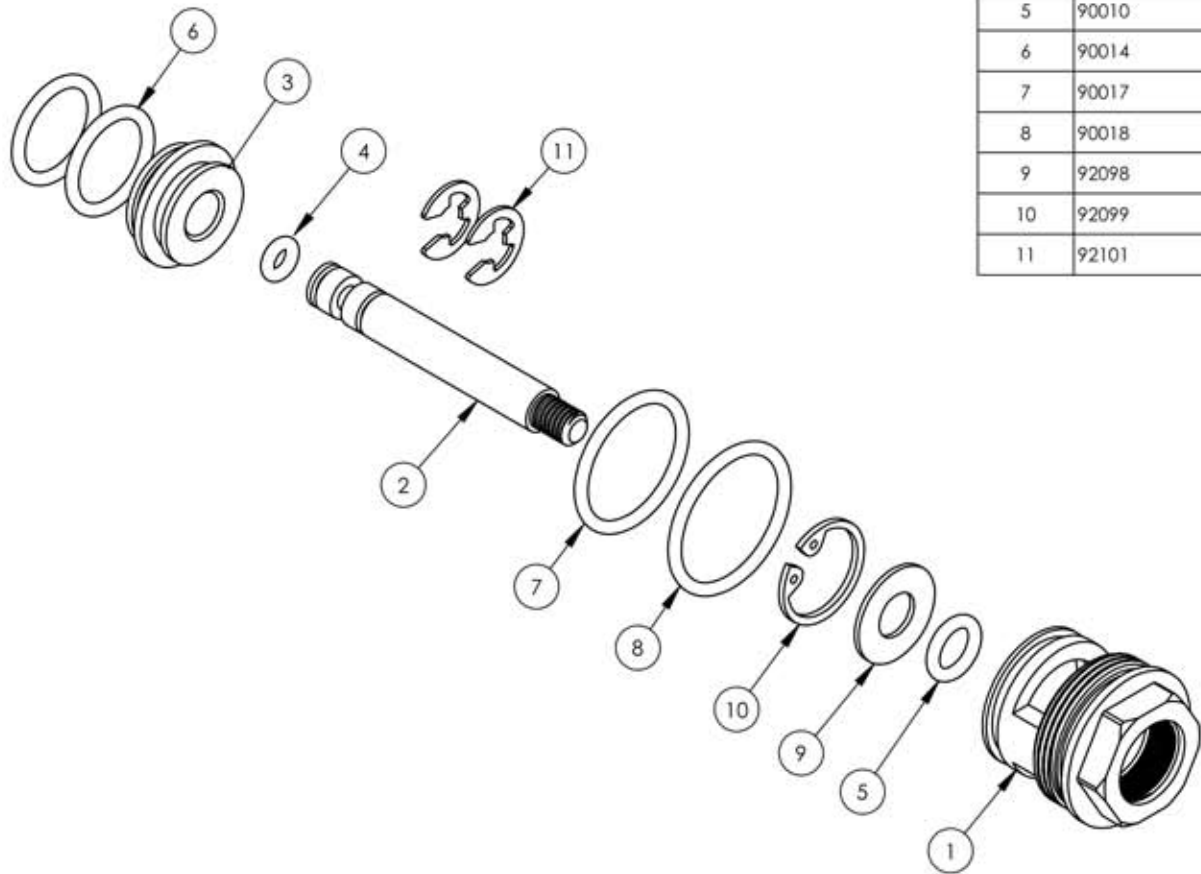


ITEM NO.	PART NUMBER	DESCRIPTION	QTY.
1	10815	CARTRIDGE BODY, PB DIVERTER	1
2	10816	DIVERTING ROD FOR PB	1
3	10817	DIVERTER PLUG	1
4	90006	O-RING, 1/8"ID X 1/4"OD X 1/16"THK, AS-568-006	1
5	90010	O-RING, 1/4"ID X 3/8"OD X 1/16"THK, AS-568-010	1
6	90014	O-RING, 1/2"ID X 5/8"OD X 1/16"THK, AS-568-014	2
7	90017	O-RING, 1 1/16"ID X 1 3/16"OD X 1/16"THK, AS-568-017	1
8	90018	O-RING, 3/4"ID X 7/8"OD X 1/16"THK, AS-568-018	1
9	92098	BRASS WASHER	1
10	92099	RETAINING INTERNAL RING	1
11	92101	C-CLIP	2



A

B

C

D

E

ZONE	REV.	DESCRIPTION	DATE	APPROVED
		REVISIONS		

1261 LOGAN AVENUE
COSTA MESA, CALIFORNIA 92626
PHONE: 714.361.4800
FAX: 714.617.3120

PHYLORICH®

Defining Luxury Since 1959

PROPRIETARY AND CONFIDENTIAL
THE INFORMATION CONTAINED IN THIS DRAWING IS THE SOLE PROPERTY OF RSS MANUFACTURING. ANY REPRODUCTION IN PART OR AS A WHOLE WITHOUT THE WRITTEN PERMISSION OF RSS MANUFACTURING IS PROHIBITED.

-	-	INTERPRET GEOMETRIC DIMENSIONING & TOLERANCING IN ACCORDANCE WITH ASME Y14.5-2009 & ASME Y14.41-2003 STANDARDS. UNLESS OTHERWISE SPECIFIED, DIMENSIONS ARE IN INCHES. TOLERANCES ARE:		
NEXT ASSY	USED ON	FRACTIONS ±1/64"	DECIMALS X.X: ±.1 X.XX: ±.01 X.XXX: ±.005	ANGULAR ±.5°
APPLICATION		MATERIAL	NAME	DATE
FINISH		DRAWN	MAF	2/27/2013
DO NOT SCALE DRAWING		CHECKED	GRE	

CARTRIDGE, DIVERTER PB

SIZE	ASM/PRT NO.	REV
A	1-118	-
SCALE: 1:1	WEIGHT: lbs.	SHEET 1 OF 1

5

4

3

2

1